

Photo Credit: Mike Trenchard, Earth Sciences & Image Analysis Laboratory, NASA Johnson Space Center.

Hurricane Isabel in September 2003, as seen from the International Space Station.



# GLM Flash Data Trends During Tropical Cyclone Intensification Changes

---



David J. PeQueen

Eric C. Bruning

9 September 2020

GLM Science Team Meeting

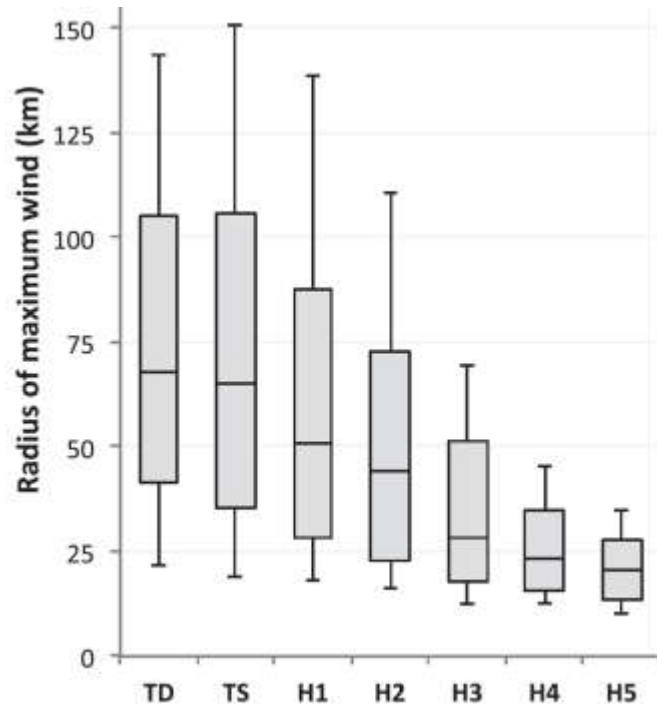
# Tropical Cyclone Intensity

## Rapid Intensification

- 30 kt or greater increase in max TC sustained wind in a 24-hr period
- Needs warm sea surface temperatures and low wind shear

## Radius of Maximum Wind (RMW)

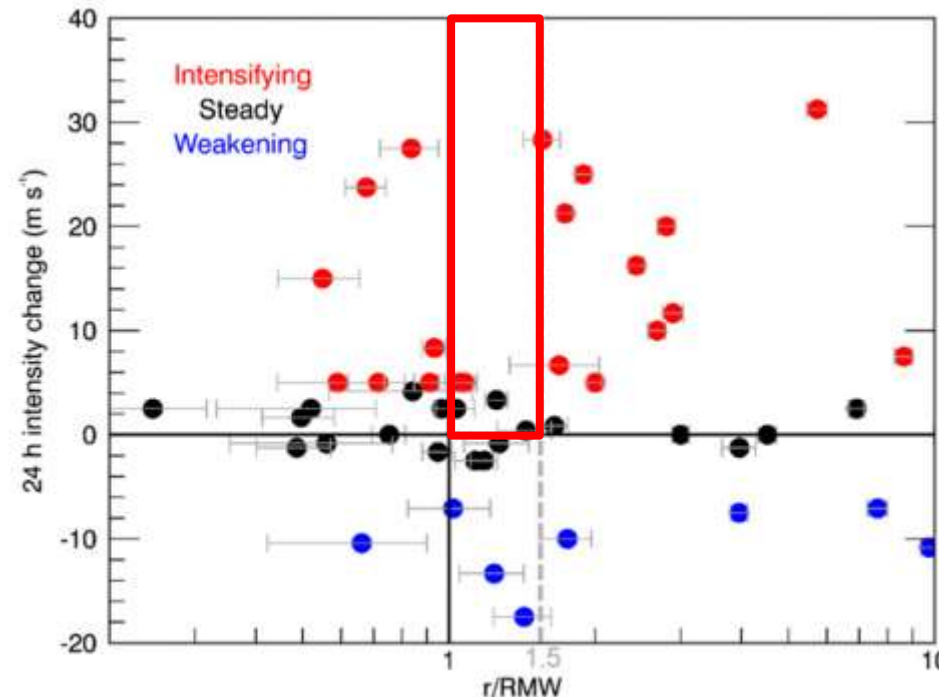
2005-2014 TCs in FLIGHT+ data set.  
(Stevenson et al. 2018, Fig. 1).



Saffir-Simpson Hurricane Wind Scale

| Category | Winds [kt] |
|----------|------------|
| 1        | 64-82      |
| 2        | 83-95      |
| 3        | 96-112     |
| 4        | 113-136    |
| 5        | 137+       |

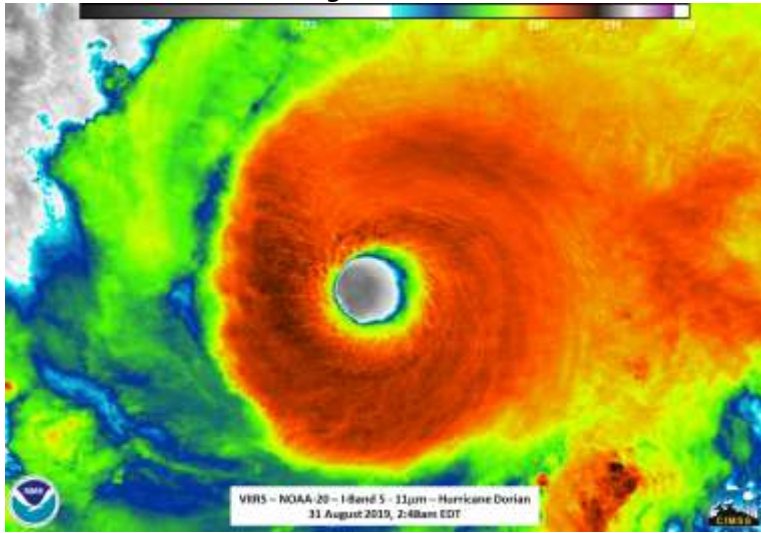
ICLB radial position relative to the RMW



NA TCs 24-hr intensity change (Stevenson et al. 2018, Fig. 5).

Stern et al. (2015) finds in idealized numerical simulations that “most contraction is completed prior to most intensification”

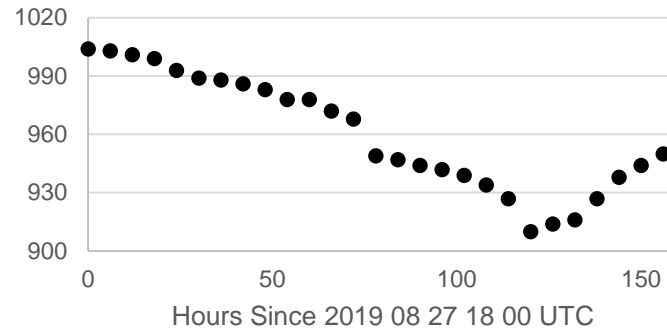
Photo Credit: [nesdis.noaa.gov/content/hurricane-dorian-2019](https://nesdis.noaa.gov/content/hurricane-dorian-2019)



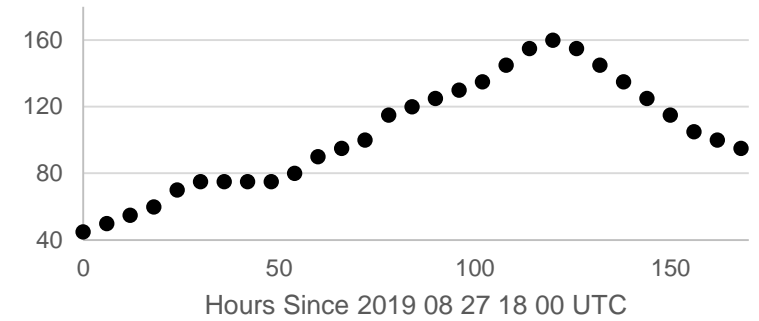
# Hurricane Dorian (2019 NA)

Peak intensity: 910 mb; 160 kt (Category 5) on Sept. 1

Minimum Pressure [mb]

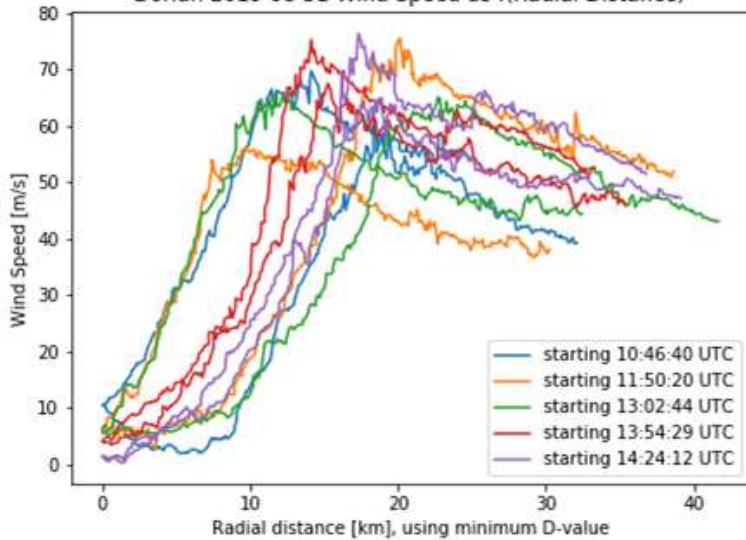


Wind Speed [kt]

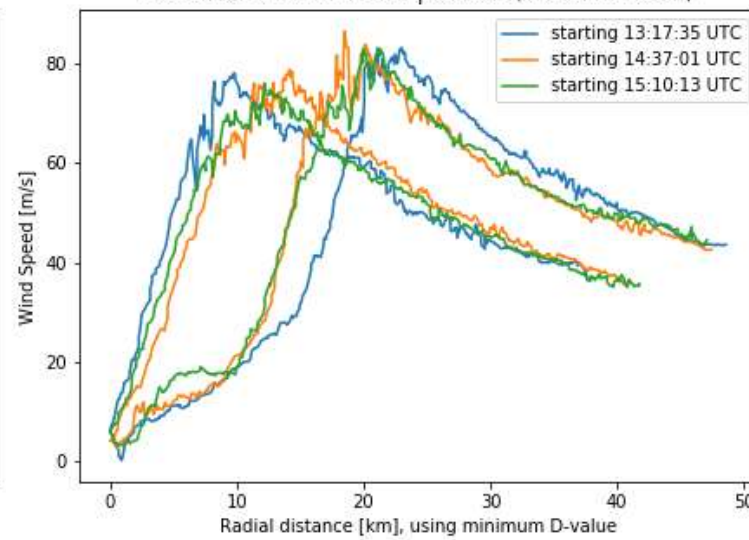


## Determining the Radius of Maximum Wind

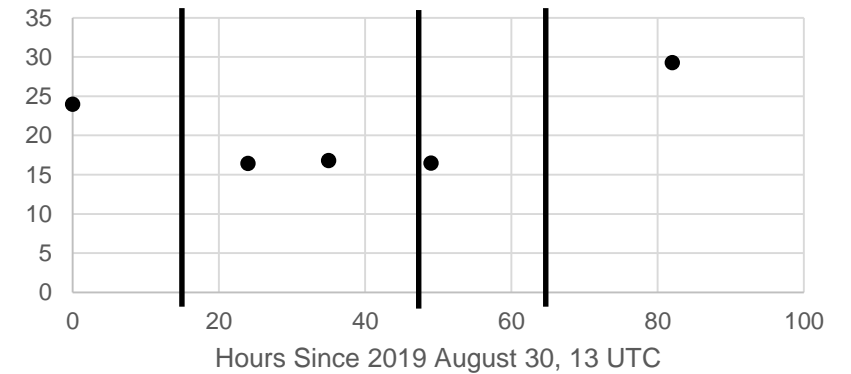
Dorian 2019 08 31 Wind Speed as f(Radial Distance)



Dorian 2019 09 01 Wind Speed as f(Radial Distance)



Dorian Average RMW [km]

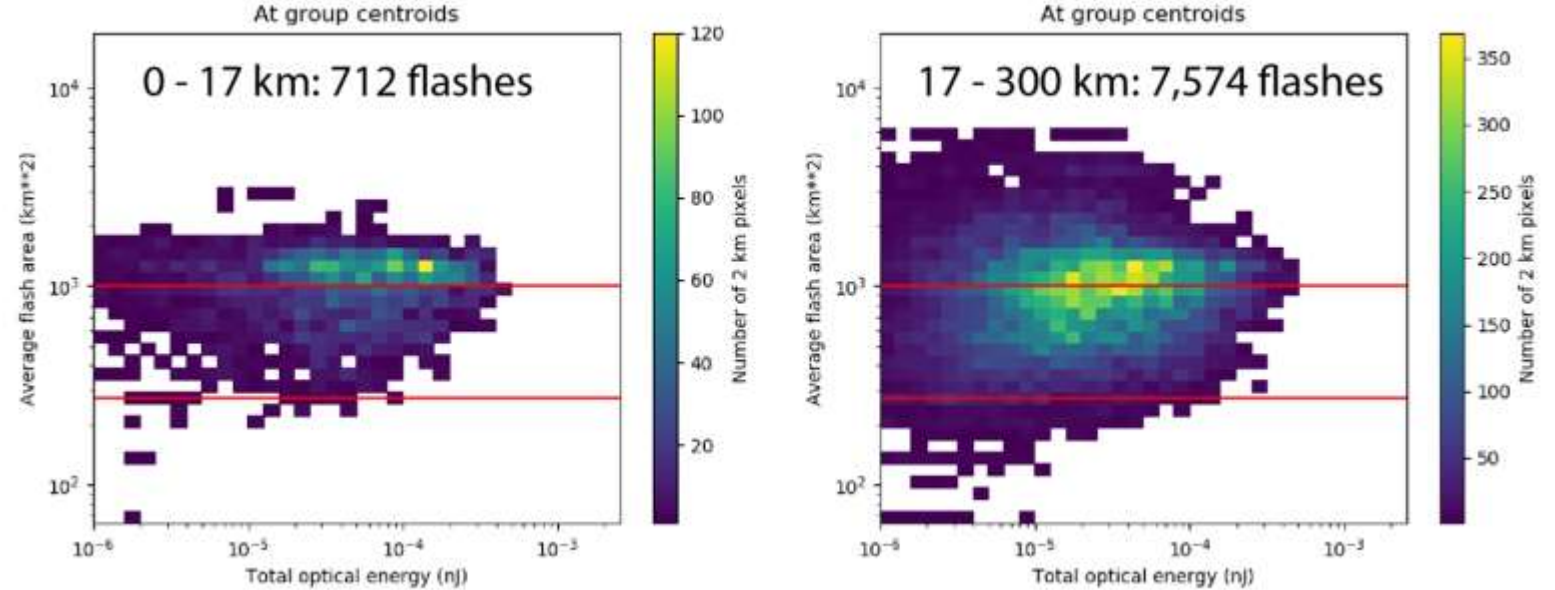


# Hurricane Dorian (2019 NA)

Dramatic shift in core lightning characteristics that is less evident in the rainband flashes

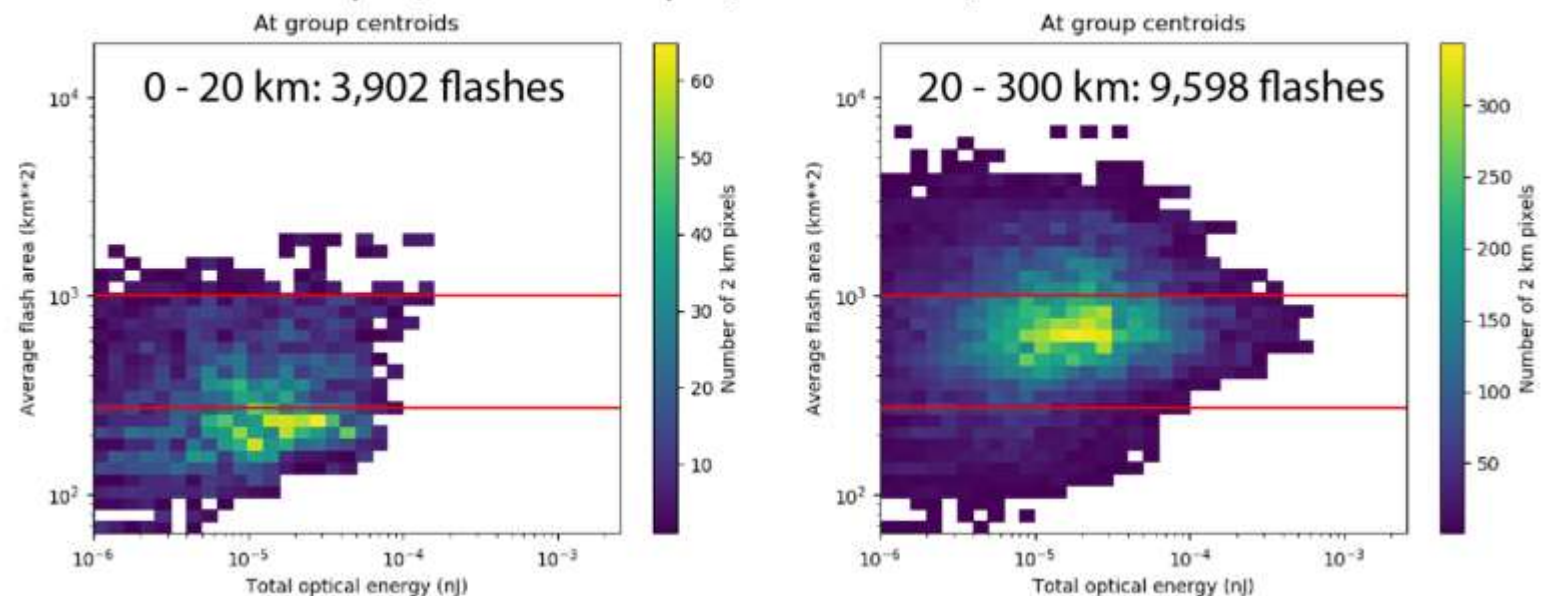
- AFA decrease
- TOE decrease

2019 Aug 31, 0600 to Sep 1, 1200 UTC; 120 kt to 155 kt



Strengthening

2019 Sep 1, 1200 to Sep 2, 0600 UTC; 155 kt to 145 kt



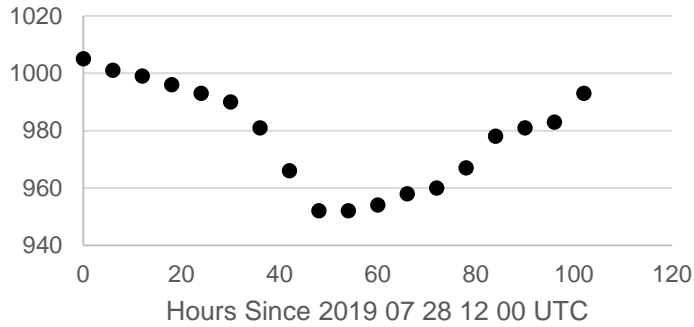
Weakening



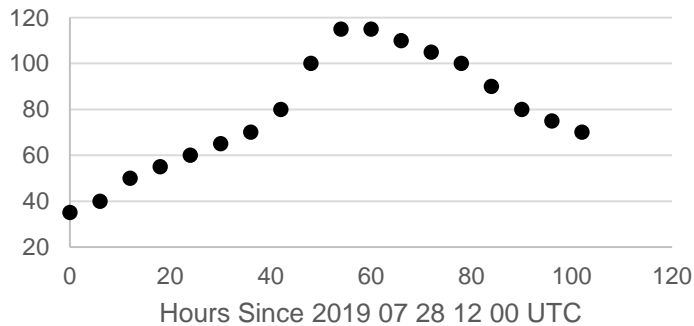
GOES-17 VISIBLE IMAGE AT 2222 UTC 30 JULY 2019 OF ERICK NEAR PEAK INTENSITY (COURTESY CIMSS).

# Hurricane Erick (2019 ENP)

### Minimum Pressure [mb]



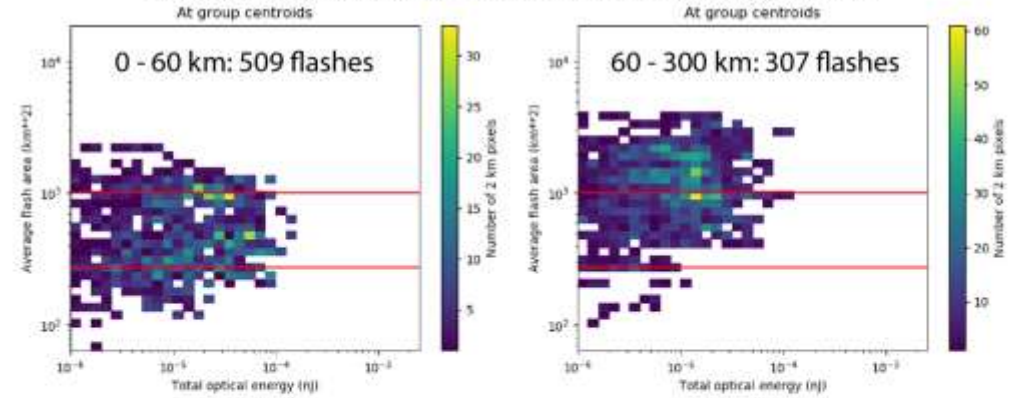
### Wind Speed [kt]



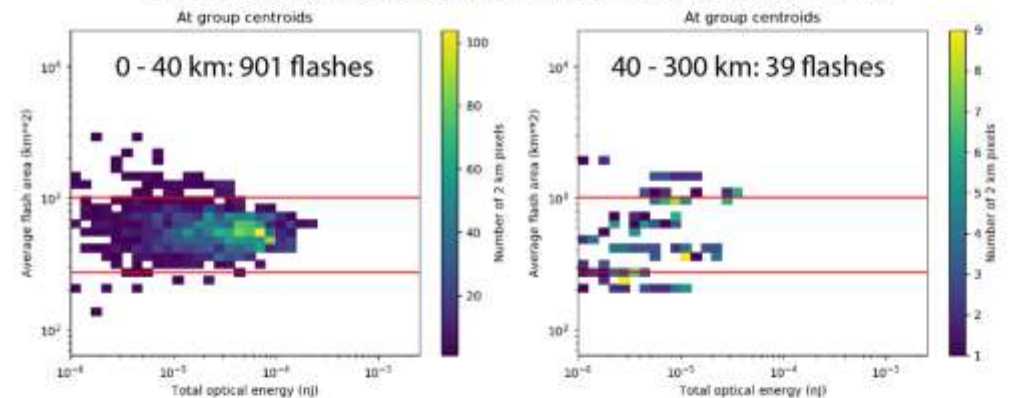
Peak intensity:  
952 mb; 115 kt  
(Category 4)  
on Jul. 30-31

- Big spike in FED around time of peak intensity
- TOE decrease
- AFA slight increase

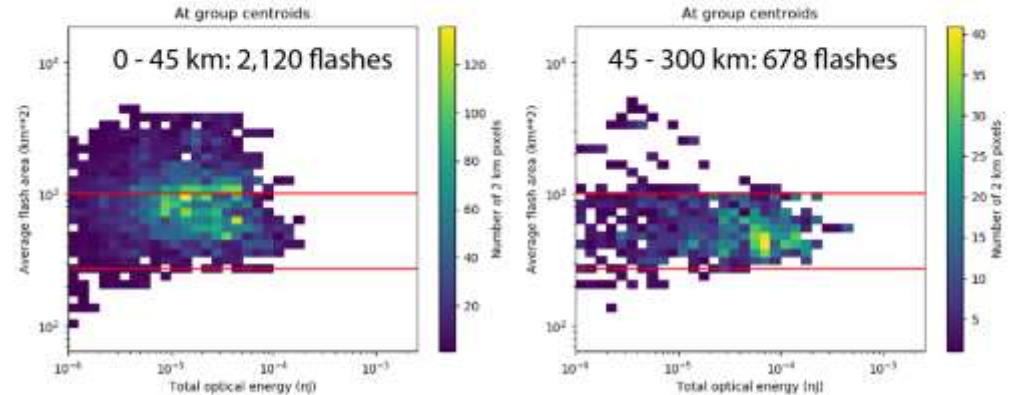
2019 Jul 28, 1200 to Jul 30, 0000 UTC; 35 kt to 70 kt



2019 Jul 30, 0000 to Jul 31, 0000 UTC; 70 kt to 115 kt



2019 Jul 31, 0000 to Aug 1, 1800 UTC; 115 kt to 70 kt



# Diurnal Cycle in Dorian

# Upcoming Work

- Complete pixel statistics for GLM-era systems (both NA & ENP) with RMW divisions and manual track corrections as needed
- Characterize diurnal cycle effect on pixel statistics
  - Minimum detected TOE

